



Process Flow, Mechanical

Applicable for MD300

Contents

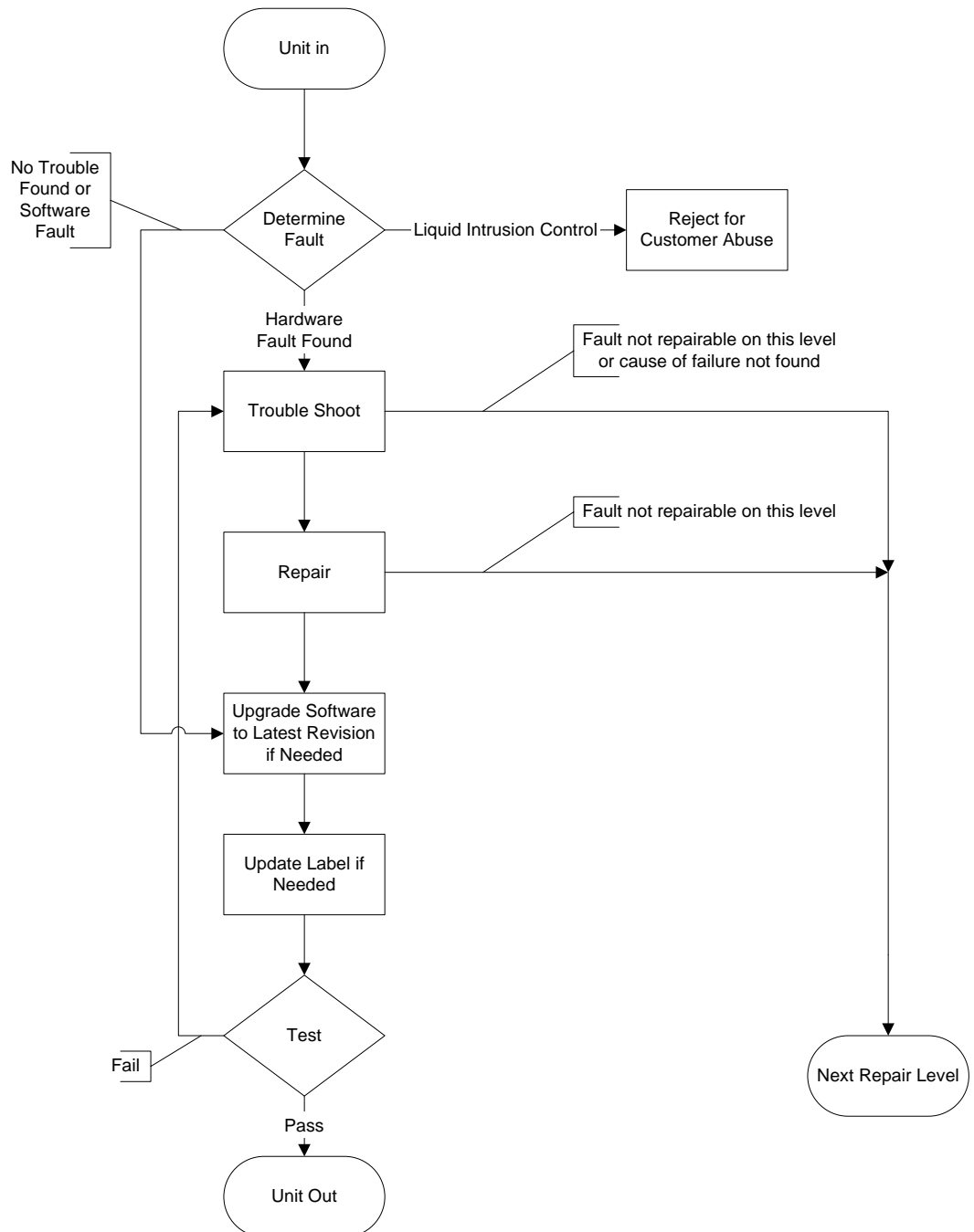
| | | |
|----------|---------------------------------|----------|
| 1 | General | 2 |
| 2 | Process Flow | 2 |
| 3 | Process Description..... | 3 |
| 4 | Revision History..... | 3 |



1 General

This document describes the basic process flow to be followed when repairing the MD300 USB dongle. The main FEA documents that are applicable for each of the process areas are also identified. The actual flow of this product through a repair center may vary slightly from that specified in the basic process flow.

2 Process Flow





3 Process Description

| Box | Reference |
|---|--|
| Unit in | Process the USB dongle according to local requirements. |
| Determine Fault | <p>Test Instruction, Mechanical Determine if the USB dongle is faulty or not, and try to confirm the customer's complaint. Only perform those tests necessary to confirm the failure.</p> <p>If a hardware fault is found, or a hardware and software fault is found, then proceed to Trouble Shoot.</p> <p>If only a software fault is found, then proceed to Upgrade Software to Latest Revision.</p> <p>If no hardware or software fault is found, then proceed to Upgrade Software to Latest Revision.</p> <p>If liquid intrusion or other abuse is found, then proceed to Reject for Customer Abuse.</p> |
| Reject for Customer Abuse | <p>Test Instruction, Mechanical If liquid intrusion or abuse is found, then reject the product according to local requirements.</p> |
| Trouble Shoot | <p>Trouble Shooting Guide, Mechanical Try to determine the cause of the failure.</p> |
| Repair | <p>Working Instruction, Mechanical Repair the faulty USB dongle according to instructions.</p> <p>Product Change Survey, Mechanical Perform any mandatory repairs.</p> |
| Upgrade Software to Latest Revision if Needed | <p>Test Instruction, Mechanical Upgrade the software to the latest revision if needed.</p> |
| Update Label if Needed | <p>Working Instruction Mechanical Print and apply a new label if needed.</p> |
| Test | <p>Test Instruction, Mechanical Perform all tests as described in the instruction.</p> |
| Unit Out | Process and package the USB dongle according to local requirements. |
| Next Repair Level | If the cause of the failure cannot be found or a unit is not repairable at this level, then escalate the USB dongle to the next repair level, or return it to the customer at the customer's request. |

4 Revision History

| Rev. | Date | Changes / Comments |
|------|----------------|--------------------|
| 1 | March 11, 2008 | Initial Release |